

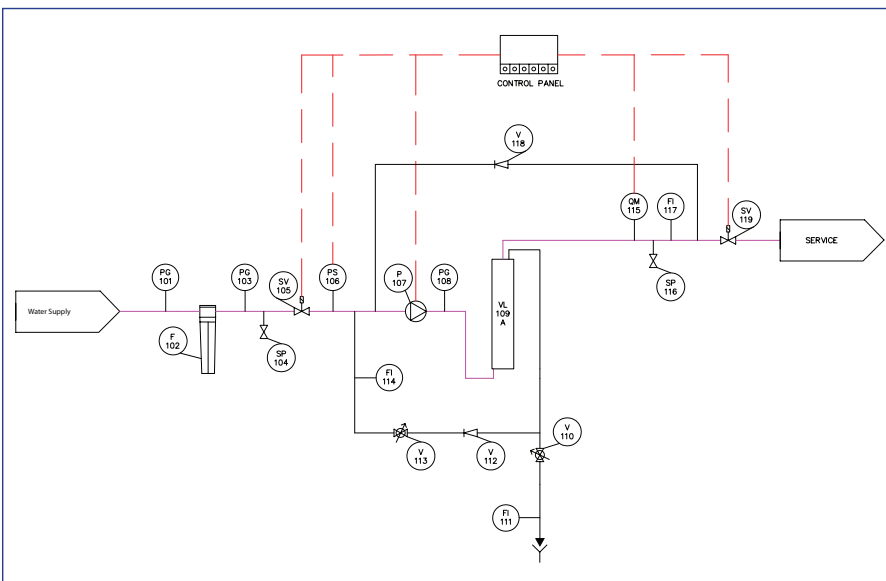
REVERSE OSMOSIS PLANT

- SUPERMINI RANGE

The SUPERMINI Reverse Osmosis range is a commercial unit designed with reduced complexity representing good value, efficient entry level plant to cater for commercial flow requirements in less critical applications. It offers easy compact installation and operation whilst retaining high performance low energy membranes and permeate recycle as standard. This, coupled with a programmable controller gives this entry level unit a strong footing within the product range. Some notable features include:-

KEY FEATURES

- OS 3030 Programmable controller for RO monitoring and control providing continuous display of permeate conductivity, plant status and hours run.
- High level of instrumentation with flow monitoring on permeate, concentrate and concentrate recycle.
- Permeate recycle as standard to reduce water wastage and extend membrane life.
- Automated Permeate quality monitoring and control.
- Facility for sampling permeate from individual RO membrane vessels.
- Full mechanical and electrical assembly on 304 stainless steel skid, complete with adjustable legs.
- Small footprint required for installation.
- Low energy membranes.
- Full factory acceptance testing at our UK works prior to delivery.



FUNCTIONAL DESCRIPTION

The pre-treated water supply is fed through a pre filter (5 μ m filter element) and inlet solenoid before reaching the RO high pressure pump. High pressure water is then passed through semi-permeable membranes where water diffusion takes place, typically rejecting approx. 95% - 99% of contaminants. This purified water is referred to as permeate. The rejected water that does not pass through the membrane contains high concentrations of rejected ions and is known as concentrate. A portion of concentrate will be recycled through the RO with the remainder passed to drain.

REVERSE OSMOSIS PLANT

- SUPERMINI RANGE

TECHNICAL DATA

RO Model	SUPERMINI 300	SUPERMINI 500
Capacity*	300 L/h	500 L/h
Membrane Qty	1	2
Stabilized salt rejection	99%	99%
Water recovery	max 75%	max 75%
Typical Treated Water Quality*	<30 µS/cm	<30 µS/cm
Concentrate recirculation (min)	650 L/h	350 L/h
Feed water intake	1/2"	1/2"
Permeate outlet	1/2"	1/2"
Drain outlet	1/2"	1/2"
HP Pump rated power	0.55kW	0.55kW
Control panel current rating	4A	4A
Power connection	240/50	240/50
Protection type	IP55	IP55
Feed water pressure (min/max)	2/6 bar	2/6 bar
Feed water pressure fluctuation	± 0.5 bar	± 0.5 bar
Permeate back pressure (max)	0.2 bar	0.2 bar
System pressure (max)	12 bar	12 bar
Feed water temperature (min/max)	5/25 °C	5/25 °C
Ambient temperature (max)	40 °C	40 °C
Relative humidity	<95%	<95%
Dimensions (HxWxD)	1650mm x 650mm x 480mm	1650mm x 650mm x 480mm

* Dependent upon feed water supply quality. Projections are made based upon a maximum feed TDS of 1,000 mg/L at 15 °C.

Other products in this range

An extensive range of cost effective Reverse Osmosis models including the MINI, MIDI & MAXI are available providing flow rates from 300 litres per hour to 25m³ per hour with additional pre and post treatment equipment to suit all applications.

Please contact us for more information and assistance in selecting equipment to best suit your requirements.



For further information regarding this product please contact us at:



info@vapourwash.com